



ADMISSIONS OPEN

INDUSTRY-ORIENTED AVIATION & LOGISTICS EDUCATION IN MUMBAI

BVMT'S LALIT SETH COLLEGE OF AVIATION, ARTS, COMMERCE AND SCIENCE

Earn & learn base program direct recruitment to Aviation & Logistics Industry from the date of admission

SUPPORT BY: Rainbow Aviation Pvt. Ltd.

Well-wishers: Challenge Group, VietJet Air Cargo, Kenya Airways Cargo, Uzbekistan Airways, Mercury Americas.

IN A WEEK

- 4 Days Industry Training (Stipend + Local Pass)
- 2 Days Classroom Learning

EDUCATIONAL PROGRAMME PARTNERS

- DUKE'S INTERNATIONAL UNIVERSITY (NEP 2020)
Intake 30 (4 years 8 Semester Programme)

CENTRE ADDRESS:

P. P. Dias Compound, Natvar Nagar, Road No.5, Jogeshwari East, Mumbai – 400060

• FOREIGN LANGUAGE (READ & WRITE-ANY ONE AS PER INSTITUTE)

• French • Spanish • German • Russian • Chinese • Arabic

• ELIGIBILITY FOR ADMISSION

12th Pass / Equivalent from any recognized board

• EMAIL:

bandivali.school@gmail.com

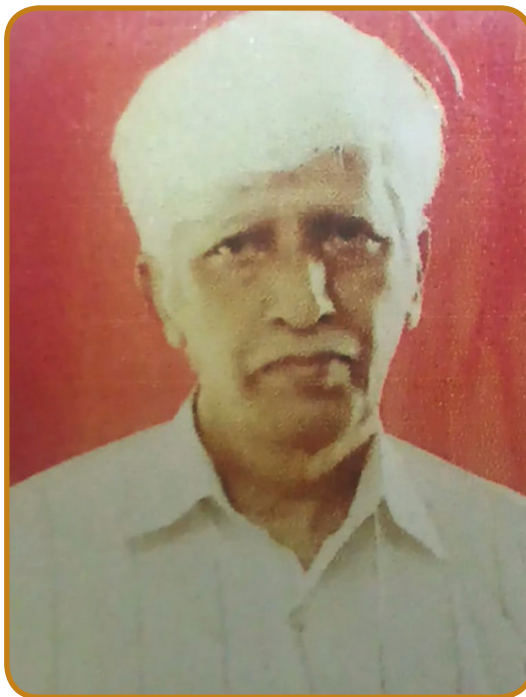
• WEBSITE:

www.bandivalividyamandirtrust.org.in



Mr. Advait Potnis

Chairman- Bandivali Vidya Mandir Trust



Mr. Purushottam Dewoolkar

*Managing Trustee/
Secretary - Bandivali Vidya Mandir Trust*

“

It gives me great pleasure to extend my heartfelt congratulations to BVMT's Lalit Seth College of Aviation, Arts, Commerce and Science on the launch of its innovative Degree Programme in Aviation & Logistics Management.

This initiative reflects a forward-looking vision towards creating skilled and industry-ready professionals for one of the fastest-growing sectors of the economy. By combining academic learning with practical industry exposure, the institute is opening new avenues of opportunity for aspiring students.

I commend the management for their commitment to quality education and professional development. I am confident that this programme will contribute significantly to the growth of the aviation and logistics industry while empowering students with rewarding career opportunities.

On behalf of BVMT Trust, School & Junior College, I extend my best wishes to the institute, its faculty members, and students for continued success and excellence in the years ahead.

With Best Wishes,

”

“

I am delighted to learn about the launch of the new Degree Programme in Aviation & Logistics Management by of BVMT's Lalit Seth College of Aviation, Arts, Commerce and Science.

In today's rapidly evolving world, the aviation and logistics sectors offer tremendous career opportunities and play a vital role in the growth of the global economy. The introduction of this industry-oriented degree programme is a commendable initiative that will help students acquire the knowledge, skills, and practical exposure required to succeed in these dynamic industries.

I appreciate the vision and efforts of the management in creating an educational platform that focuses on both academic excellence and industry readiness. Such programmes will not only benefit students but also contribute significantly to meeting the growing demand for qualified professionals in the aviation and logistics sectors.

I extend my heartfelt congratulations and best wishes to the entire team of BVMT's Lalit Seth College of Aviation, Arts, Commerce and Science. I am confident that the institute will emerge as a centre of excellence and play a significant role in shaping the future of young professionals.

I wish the institute, faculty members, and students great success in all their future endeavours.

Best Wishes,

”



Mr. Lalit Kumar Seth

BVMT'S Lalit Seth College of Aviation, Arts,
Commerce and Science & ASCT'S Lalit Seth
Institute of Aviation & Logistics Management-
Founder & Chairman

Eastern Cargo Carriers Pvt Ltd-Director

“

Respected guests, industry leaders, faculty members, students, and dear friends,

It gives me immense pleasure to welcome you all to the inauguration of BVMT'S Lalit Seth College of Aviation, Arts, Commerce and Science & ASCT'S Lalit Seth Institute of Aviation & Logistics Management.

As the Founder of this institute and being associated with the airline and logistics industry, I have personally experienced the growing demand for skilled, knowledgeable, and industry-ready professionals. The aviation and logistics sectors are expanding rapidly, and industries today require candidates who are not only academically qualified but also professionally trained with practical understanding of real-time operations.

The vision behind establishing this institute is to bridge the gap between education and industry requirements. Our aim is to provide students with quality education, practical exposure, professional values, communication skills, and operational knowledge that will help them build successful careers in aviation, cargo, airline operations, and logistics management.

From an industry perspective, institutes like this are extremely important because they help create trained manpower that can contribute effectively from the beginning of their careers. Companies always value professionals who understand workplace discipline, customer service, operational responsibilities, and industry expectations.

Through this institute, we are committed to developing future professionals and leaders who will contribute positively to the aviation and logistics sectors in India and globally.

This is a step forward to give mature talent for "ATMA NIRBHAR BHARAT" for Aviation Logistics Wings".

I sincerely thank all our industry partners, faculty members, management team, and supporters who believed in this vision and contributed towards making this initiative possible.

I wish the institute, faculty members, and students great success, growth, and achievements in the years ahead.

Thank you very much.

”



Dr. Nishant Seth

Principal – BVMT’S Lalit Seth College of Aviation, Arts, Commerce and Science

Managing Director – RainbowAviation Cargo Pvt. Ltd.

“

Respected guests, esteemed industry leaders, dedicated faculty members, aspiring students, and dear friends,

It gives me immense pleasure and pride to welcome you all on this momentous occasion — the inauguration of BVMT’S Lalit Seth College of Aviation, Arts, Commerce and Science & ASCT’S Lalit Seth Institute of Aviation & Logistics Management.

Today marks not merely the opening of an educational institution, but the beginning of a shared vision — a vision to nurture, train, and build the future professionals of the aviation and logistics industry.

As both an educator and an industry professional, I have witnessed first-hand the growing demand for skilled, knowledgeable, disciplined, and industry-ready talent. The aviation and logistics sectors are expanding at an unprecedented pace, and the industry today seeks candidates who go beyond academic qualifications — individuals equipped with practical exposure, strong communication skills, professionalism, and a deep operational understanding of the field.

Through this institute, our core mission is to bridge the gap between academic learning and real-world industry requirements. We are committed to ensuring that every student gains not only theoretical knowledge but also meaningful industry exposure, empowering them to face practical challenges with confidence and competence.

From an employer’s perspective, institutions like ours play a pivotal role in shaping trained professionals who can contribute positively and effectively right from the very beginning of their careers. The combination of quality education and industry-oriented training will not only help students build successful and rewarding careers but will also strengthen and support the long-term growth of the aviation and logistics sectors as a whole.

At BVMT’S Lalit Seth College of Aviation, Arts, Commerce and Science & ASCT’S Lalit Seth Institute of Aviation & Logistics Management, we firmly believe that true education must create opportunities, in still confidence, foster leadership, and build strong professional values among the youth of our nation.

I extend my heartfelt gratitude to all our esteemed industry partners, dedicated faculty members, the visionary management team, and every individual who believed in this mission and extended their support to make this initiative a reality.

I wish the institute, its students, and its faculty members abundant success, continuous growth, and remarkable achievements in the years to come.

Thank you very much.

”



Mr. Pramod Menon

Rainbow Aviation Pvt Ltd- Vice President

*Air Cargo Club of Bombay-
Managing Committee Member*

“

This is an excellent initiative by BVMT'S Lalit Seth College of Aviation, Arts, Commerce and Science & ASCT'S Lalit Seth Institute of Aviation & Logistics Management, taking into consideration the requirement of the cargo industry. It is truly a pleasure to be part of this important occasion. On behalf of the airline industry, I would like to congratulate the entire team for establishing this Aviation & Logistics Management Institute.

The aviation sector is growing at a remarkable pace, and with this growth comes the increasing demand for skilled, knowledgeable, and professionally trained manpower. Today, airlines are not only looking for qualified candidates but also individuals who understand industry culture, operational discipline, customer service, and global standards.

Institutes like this play a very important role in preparing future professionals for real industry challenges. From cargo operations to airline management and logistics coordination, the opportunities are immense for students entering this field.

As employers, we always value candidates who are industry-ready from day one, and I strongly believe this institute will contribute significantly towards building such talent. This new degree will ensure qualified, educated & experience candidates entering the industry every year.

I appreciate the vision and efforts behind this initiative and wish the institute, management, and students a successful future ahead.

Thank you.

”





Mr. Nicholas Noronha

*Commercial Head - India
Rainbow Aviation Pvt. Ltd.*

IATA Training Diploma - IATA Cargo Introductory Course • (2022)

“

I want to begin by saying what an exciting time it is to be part of the aviation and logistics world in India.

Think about it. A decade ago, we were talking about India's potential. Today, we're living that potential. India is one of the fastest-growing major economies in the world. A rising middle class with real buying power. An e-commerce boom that has changed the way every single Indian shops, ships, and expects things delivered faster, smarter, better. An export-driven economy that is increasingly punching at the global level. And at the heart of all of this? Logistics and aviation.

I've spent years on the commercial side of this industry, and I can tell you the infrastructure conversation in India has completely transformed. Airports are being modernised. Cargo terminals are getting smarter. Technology is being embedded into supply chains in ways we only used to read about. The cold chain is growing. Air freight is growing. And with it, the demand for people skilled, confident, professionally trained people is growing faster than ever.

That is exactly why an institute like these matters so much.

Because here's the honest truth from an employer's perspective: when a young professional walks into our office, we don't just want someone with a degree. We want someone who understands a client's urgency. Someone who can read a market, solve a problem, and communicate confidently with an international customer sitting in Dubai or Frankfurt or Chicago.

That's not something you pick up overnight. That's what focused, industry-aligned education builds.

So to the students here you are entering an industry that is genuinely hungry for talent. India needs you. The global supply chain needs you. And the opportunities ahead of you are unlike any generation before you. To the management of BVMT'S Lalit Seth College of Aviation, Arts, Commerce and Science & ASCT'S Lalit Seth Institute of Aviation & Logistics Management congratulations. This is a meaningful initiative, and I have no doubt the impact will be felt for years to come.

Thank you very much.

”



Mrs. Shivranjani Seth

Asavari Seth Charitable Trust- Trustee

“

It gives me immense pleasure to be part of this special occasion of inaugurating BVMT'S Lalit Seth College of Aviation, Arts, Commerce and Science & ASCT'S Lalit Seth Institute of Aviation & Logistics Management.

plays a very important role in shaping the future of society and industry. Today, the aviation and logistics sectors are among the fastest-growing industries, creating numerous opportunities for young professionals. However, there is also a strong need for skilled, knowledgeable, and industry-ready manpower.

Through this collaboration, our objective is to support quality education that combines academic learning with practical industry exposure. We strongly believe that students should not only receive degrees but also gain professional values, communication skills, operational understanding, and confidence to succeed in the corporate world.

This institute will help students build successful careers while also supporting the aviation and logistics industry with trained and professional manpower.

As Trustees, we are proud to be associated with an initiative that contributes towards education, employment generation, and industry development.

I congratulate the entire management, faculty members, and industry partners for making this vision a reality.

I wish the institute and all students a bright and successful future ahead.

Thank you very much.

”





Mrs. Dipika M Gilda

Rainbow Aviation Pvt Ltd -Finance Head

“
Heartiest congratulations to the entire team on launching this BVMT’S Lalit Seth College of Aviation, Arts, Commerce and Science & ASCT’S Lalit Seth Institute of Aviation & Logistics Management focused on preparing students for the real corporate world. It is inspiring to see an institution going beyond academics to bridge the gap between classroom learning and industry expectations through corporate grooming, practical exposure, communication skills, and professional development.

From a Finance and Management perspective, such initiatives are highly valuable as organizations today seek industry-ready professionals who can contribute effectively from day one. The focus on holistic development reflects the institute’s commitment towards creating industry-ready talent and nurturing future leaders with the right professional mindset. This initiative will undoubtedly add immense value to students by preparing them for real-world corporate challenges and expectations.

Wishing the management, faculty, and students continued success in this impactful journey.

Thank You.

”



Mr. Mukund Deshmukh

Asaavari Seth Charitable Trust- Trustee

“
As Trustees associated with this collaboration, we strongly believe that education and industry must work together for the development of future professionals. The aviation and logistics industry is growing rapidly, and there is an increasing demand for candidates who are professionally trained and practically skilled.

This institute is an excellent initiative because it focuses on bridging the gap between academics and real industry requirements. Students will benefit not only from classroom education but also from practical exposure, industry interaction, and professional guidance.

From an industry perspective, institutes like this are highly beneficial because they help create confident, disciplined, and industry-ready professionals who can contribute effectively from the beginning of their careers.

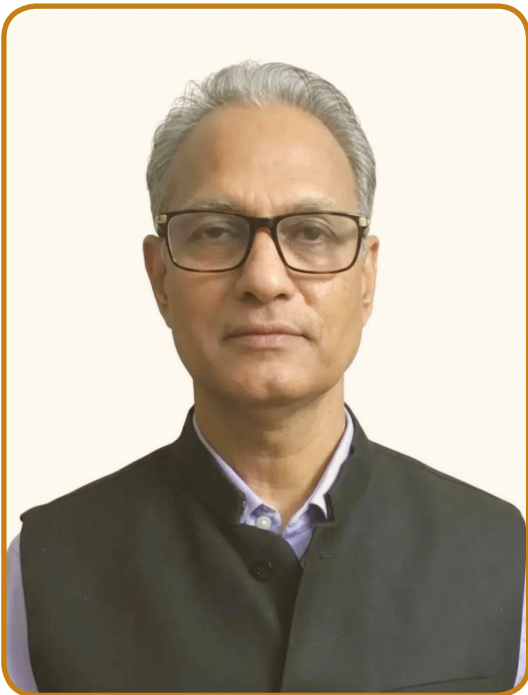
We are proud to support an institution that aims to create opportunities for students and contribute positively to the future growth of the aviation and logistics sectors.

I sincerely congratulate the founders, management team, faculty members, and everyone associated with this initiative.

I wish the institute will create new era in the field of aviation & logistics Industry.

Thank you.

”



Mr. Subhash C. Varshney I.R.S (R)

“

Having served earlier as Principal Chief Commissioner of CGST, Mumbai, I have closely observed the critical role that Customs and GST play in India's trade, logistics, and economic ecosystem. Today, Customs and GST together form the backbone of the movement and taxation framework governing goods across domestic and international supply chains.

At airports and seaports, which are the principal gateways for global trade, Customs plays a vital role in regulating imports and exports through valuation, classification, duty assessment, compliance monitoring, and trade facilitation. At the same time, GST has transformed the domestic movement of goods by creating a seamless taxation structure that supports operational efficiency and transparency.

The integration of Customs and GST systems has significantly improved logistics and supply chain management in India. Initiatives such as digitization, faceless assessment, electronic filing, risk management systems, and integrated customs platforms have reduced clearance timelines, minimized operational delays, and strengthened India's competitiveness in global trade.

In today's rapidly growing aviation and logistics industry, there is a strong demand for professionals who understand not only operational management but also regulatory frameworks, taxation systems, compliance procedures, and international trade practices.

Institutes like BVMT'S Lalit Seth College of Aviation, Arts, Commerce and Science & ASCT'S Lalit Seth Institute of Aviation & Logistics Management play an extremely important role in preparing students for these industry requirements. The institute's focus on combining academic knowledge with practical industry exposure will help students become skilled, knowledgeable, and industry-ready professionals.

I strongly believe that education in aviation and logistics must go beyond textbooks and provide students with a clear understanding of real-world industry operations, trade facilitation systems, and supply chain dynamics.

I congratulate the management and faculty members for taking this valuable initiative and contributing towards the development of future professionals for India's aviation and logistics sectors.

I wish the institute and all students great success and achievements in the years ahead.

Thank you very much.

”



Mr. Dinyar Nadirshaw

Eastern Cargo Carriers Pvt Ltd- President

“

As someone associated with Marine, aviation and logistics industry, I believe the LS Institute of Aviation & Logistics Management has arrived at the right time.

Our sector is expanding rapidly, yet one of the biggest challenges remains finding trained, industry-ready professionals.

This initiative is a timely and positive step toward bridging the gap between academic education and practical industry requirements.

The Marine, aviation, and logistics sectors need young talent equipped with technical knowledge, strong communication, professionalism, and hands-on operational understanding. Institutes like these will guide students in the right direction before they enter the workforce and will help meet industry demand for skilled personnel.

I am confident the institute will create meaningful employment opportunities for students and supply companies with much needed well-prepared talent in the years ahead.

I believe the institute will play an important role in shaping future talent and preparing students for meaningful careers. It will also help companies by creating a stronger pipeline of skilled manpower in the years ahead.

I congratulate the management and the entire team on this wonderful initiative, and I wish the institute a bright and successful future.

Thank you.

”





Mrs. Jane Vaz

Rainbow Aviation Pvt Ltd- Manager-India

“ It gives me immense pleasure to witness the opening of this Aviation & Logistics Management Institute.

As someone associated with sales and business development across India, I have seen how rapidly the aviation and logistics sectors are expanding. With growing competition and customer expectations, companies need talented professionals who understand communication, relationship management, operational efficiency, and customer service.

This institute will create a strong foundation for students who wish to build careers in aviation, cargo, logistics, and related industries. From an employer’s perspective, it is always encouraging to see institutes focusing on practical learning and industry exposure.

The future of the industry depends on young professionals who are educated, skilled, confident, and ready to perform in real business environments.

I congratulate the management and faculty members for taking this excellent initiative and contributing towards the future growth of the industry.

My best wishes to all students and the entire institute for a successful journey ahead.

Thank you.”



CA Yeshwant J Padhye

*Founder- Y J Padhye & Co,
Chartered Accountants*

“ The introduction of a Bachelor’s degree in Aviation through vocational education is indeed a significant development. Given the current growth trajectory within the aviation sector, a notable disparity exists between the supply of trained and skilled back-office personnel and the actual demand.

This specialized degree program is designed to equip learners with the essential skills, fostering their adaptability and confidence.

I extend my best wishes for the successful launch of this initiative, which is poised to contribute substantially to the employment ecosystem and the nation’s overall growth.

Thanks.”



Prof. (Dr) Satish Ailawadi

“

The field of Logistics in general and particularly Aviation Logistics as an academic discipline and a profession— has undergone a profound transformation in recent years. In today’s digital era, knowledge is expanding at an unprecedented pace, and technology is reshaping the entire ecosystem of knowledge and skills.

In alignment with the National Education Policy (NEP) -2020 and under Skill India program, we have launched UGC approved Four years Under Graduate Program- Bachelor of Vocation- in Aviation Logistics. We are a pioneer institution in Aviation Logistics, and are at the forefront of grooming skilled manpower in the Aviation sector. Our curriculum has been designed keeping in view the emerging needs of Aviation Sector and the pedagogical tools used in our programs will be centered around experiential learning rather than pure class room training leading to holistic development and professional excellence.

We believe in building strong and sustainable careers by blending rigorous theoretical learning with hands-on experiential training, ensuring our students develop critical thinking, problem-solving abilities, and team-building skills.

Our mission is to nurture future corporate ready professionals for Aviation Sector by bringing together top-tier faculty from academia and industry. Our students will benefit from a carefully curated curriculum in emerging and high-impact areas of Aviation Logistics.

We promise to continuously evolve our curriculum, enhance corporate engagement, and keep pace with dynamic aviation landscape. With world-class faculty, and state-of-the-art facilities, we offer an ideal environment for aspiring professionals. Situated in one of India’s largest business hubs and the financial capital of the country, we will provide a vibrant and immersive learning experience, equipping students with the knowledge, skills, and mind-set to excel in the ever-growing Aviation Sector.

On behalf of the Board members, esteemed faculty, dedicated staff, and dynamic aviation sector, I warmly invite you to embark on your professional journey with us to build your careers successfully in the domain of Aviation Logistics.

Wishing you success and a bright future!

”

• AVIATION INDUSTRY

The aviation industry involves manufacturing, maintaining, and flying aircraft for various purposes, including passenger travel, cargo transport, and military operations. It's a vast system of airlines, airports, aircraft manufacturers, and air traffic control that connects people and goods worldwide. Key aspects include everything from the design of aircraft and airport operations to the air travel experience itself, making it a crucial part of the global economy.



• HOW TO JOIN AVIATION INDUSTRY

To enter the aviation industry, you'll need to choose a specific career path (like pilot, cabin crew, or ground staff), pursue relevant education and training, gain experience through internships or on-the-job training, and then apply for jobs with airlines or other aviation companies.

1. Choose Your Path:

- Pilot: Requires flight training, passing exams, and accumulating flight hours.
- Cabin Crew: Involves interviews, medical exams, and training programs with airlines.
- Ground Staff: Airlines hired based on specific job requirements, often with on-the-job training.
- Aviation Management: Requires a degree in aviation management and potentially internships.
- Aircraft Maintenance Engineer (AME): Requires a DGCA-approved AME course and hands-on experience.
- Air Traffic Controller (ATC): Requires clearing the AAI's ATC examination and undergoing training.

2. Pursue Education and Training:

- For Pilots: Enroll in a DGCA-approved flying school and complete ground school, simulator training, and flight hours.
- For AMEs: Enroll in a DGCA-approved AME course.
- For ATC: Undergo training at the Indian Aviation Academy.
- For Cabin Crew: Airlines conduct their own training programs after selection.
- For Aviation Management: Consider a bachelor's degree in aviation management.

3. Gain Experience:

- Internships: Gain practical experience through internships or on-the-job training.
- Flying Clubs: Join a flying club for hands-on experience.
- Volunteer Opportunities: Volunteer at local airports or with regional airlines.

4. Build a Strong Resume and Network:

- Highlight qualifications and certifications: Showcase your relevant skills and achievements.
- Attend networking events: Connect with industry professionals and build your contacts.
- Utilize online resources: Stay updated on industry trends through webinars and forums.

• INTRODUCTION TO THE PROGRAMME

1. The Aviation syllabus focus on practical and theory base, personality development and enhance to develop aviation and logistics global leader.
2. The set programmed have clear and comprehensive understating of aviation and logistics business and its operational environment.
3. To develop student ability towards learn and earn base and self-employment.
4. The curriculum is design for overall development of the student in operation, soft skill and entrepreneur skill.
5. To produce all-rounder manpower for aviation and logistic industry.

OBJECTIVES

- To have a clear and comprehensive understanding of aviation business and its operational environment, such as airports, airlines, Ocean Road, cargo, safety, and regulations.
- To develop Aviation & Logistics Global Leaders.
- To provide hands on experience on most widely used computerized reservation system (CRS) for air ticketing and logistic business.
- To demonstrate a high capability in all airlines & cargo business management aspect (e.g. airline business law, aircraft types, basic reservation, and global commerce business).
- To empower students to take up competitive examinations of Govt, of India and nurturing the student to become a global leader.
- To make students employable in aviation & logistics industry.

INDUSTRY PARTNERS



Reeco Healthcare Pvt. Ltd.



Eastern Supplychain And Logistics Ltd.



Eastern Cargo Carriers (India) Pvt. Ltd.



Rainbow Aviation Pvt. Ltd.



Super Skies Air Services LLP

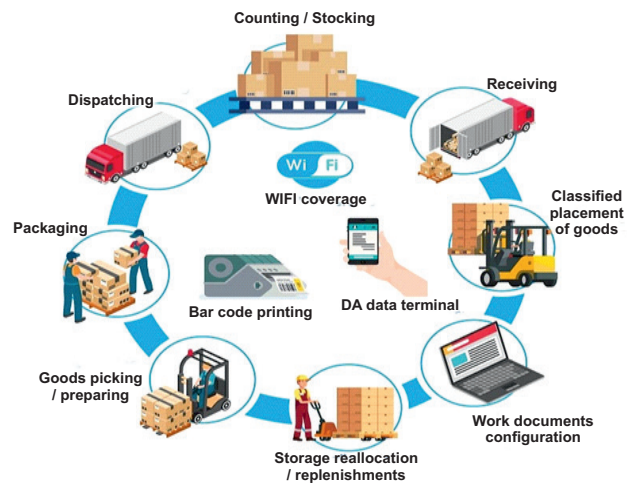
LALIT SETH COLLEGE OF AVIATION, ARTS, COMMERCE AND SCIENCE B.VOC DEGREE SPECIALIZATION PROGRAM

1. Logistics Marketing and Management	6. Inventory Management in Logistics Management
2. Custom Clearance	7. DGCA rules & regulations
3. Ramp Operations	8. Cabin Crew
4. Airport Management	9. Air Waybill (Airo Bill) & General Management
5. Material Packaging Handling	10. Import & Export policy in India

1. Logistics Marketing and Management

Logistics management is the planning, storage, transportation, and delivery of goods from one place to another. It helps businesses deliver products on time and reduce costs.

WHAT IS LOGISTICS MANAGEMENT?



2. Custom Clearance

Custom clearance is the process of getting permission from customs authorities for importing or exporting goods. It includes document checking, duty payment, and cargo inspection.



3. Ramp Operations

Ramp operations include aircraft loading, unloading, refueling, baggage handling, and aircraft parking at airports. Safety and coordination are very important in this area.



4. Airport Management

Airport management handles airport operations such as passenger services, security, airline coordination, and maintenance. The goal is safe and smooth airport functioning.



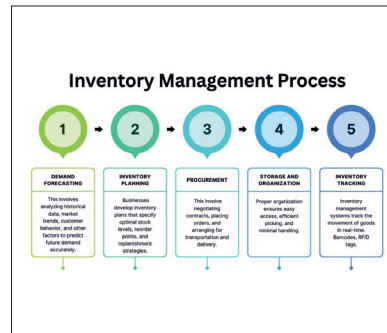
5. Material Packaging Handling

Material packaging and handling involve packing, storing, lifting, and transporting goods safely. Proper packaging prevents damage during transportation.



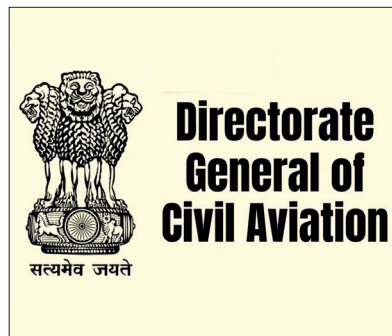
6. Inventory Management in Logistics

Inventory management controls the storage and movement of products in warehouses. It helps companies maintain the right stock levels and avoid shortages.



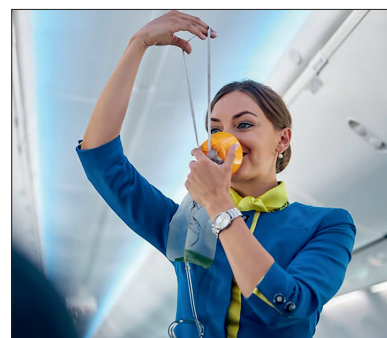
7. DGCA Rules & Regulations

The Directorate General of Civil Aviation (DGCA) is the aviation authority in India. It creates rules for air safety, pilot licensing, aircraft operations, and airport standards.



8. Cabin Crew

Cabin crew members ensure passenger safety and comfort during flights. Their duties include emergency assistance, customer service, and safety demonstrations.



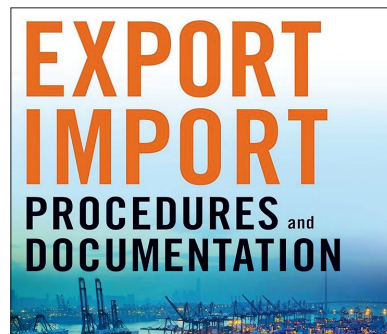
9. Air Waybill (Air Bill) & General Management

An Air Waybill (AWB) is a transport document used for air cargo shipment. It contains sender details, receiver details, cargo information, and tracking number.

Shipper's Name and Address		Shipper's Account Number		Not Negotiable Air Waybill issued by		
Consignee's Name and Address		Consignee's Account Number		Copies 1, 2 and 3 of this Air Waybill are originals and have the same validity.		
Issuing Carrier's Agent Name and City		It is agreed that the goods declared herein are accepted in apparent good order and condition (except as noted) for carriage SUBJECT TO THE CONDITIONS OF CONTRACT ON THE REVERSE HEREOF. ALL GOODS MAY BE CARRIED BY ANY OTHER MEANS INCLUDING ROAD OR ANY OTHER CARRIER UNLESS SPECIFIC CONTRARY INSTRUCTIONS ARE GIVEN HEREON BY THE SHIPPER, AND SHIPPER AGREES THAT THE SHIPMENT MAY BE CARRIED VIA INTERMEDIATE STOPPING PLACES WHICH THE CARRIER DEEMS APPROPRIATE. THE SHIPPER'S ATTENTION IS DRAWN TO THE NOTICE CONCERNING CARRIER'S LIMITATION OF LIABILITY. Shipper may increase such limitation of liability by declaring a higher value for carriage and paying a supplemental charge if required.				
Agent's IATA Code		Account No.		Accounting Information		
Airport of Departure (Addr. of First Carrier) and Requested Routing				Reference Number		
To		By First Carrier		Optional Shipping Information		
Routing and Destination		to by to by		Declared Value for Carriage		
Airport of Destination		Requested Flight/Date		Declared Value for Customs		
Amount of Insurance		INSURANCE - If carrier offers insurance, and such insurance is requested in accordance with the conditions thereof, indicate amount to be insured in figures in box marked "Amount of Insurance".				
Handling Information						
					SCI	
No. of Pieces PCP	Gross Weight	Rate Class Commodity Item No.	Chargeable Weight	Rate / Charge	Total	Nature and Quantity of Goods (incl. Dimensions or Volume)
Prepaid		Weight Charge		Collect		Other Charges
Valuation Charge						
Tax						
Total Other Charges Due Agent						
Total Other Charges Due Carrier						
I hereby certify that the particulars on the face hereof are correct and that insofar as any part of the consignment contains dangerous goods, I hereby certify that the contents of this consignment are fully and accurately described above by proper shipping name and are classified, packaged, marked and labeled, and in proper condition for carriage by air according to applicable national governmental regulations.						
Total Prepaid				Total Collect		Signature of Shipper or his Agent
Currency Conversion Rates		CC Charges in Dest. Currency		Executed on (date)		at (Place) Signature of Issuing Carrier or its Agent
For Carrier's Use only at Destination		Charges at Destination		Total Collect Charges		

10. Import & Export Policy in India

Import and export policy in India controls international trade. It includes rules, taxes, licenses, and procedures for bringing goods into or sending goods out of the country.



• CARGO AIRCRAFT

Antonov An-225 Mriya

Key cargo aircraft include the Antonov An-225 (up to 250,000 kg payload), the Boeing 747-8F (up to 140,000 kg), and the Antonov An-124 (up to 150,000 kg) for heavy and oversized cargo, while wide-bodies like the Boeing 777F and Airbus A330F offer high capacity for general freight. Smaller capacity aircraft include the Boeing 737F (approx. 20-30 tons) and turboprops like the ATR 72F (8-10 tons), designed for regional and shorter routes.



General Specifications

Length: 84 m (275 ft 7 in)

Wingspan: 88.4 m (290 ft 0 in)

Height: 18.1 m (59 ft 5 in)

Wing Area: 905 m²

Empty Weight: 285,000 kg

Maximum Takeoff Weight: 640,000 kg (1,410,958 lb.)

Performance & Capacity

- Engines: 6 × Progress D-18T turbofans, providing 229.5 kN (51,600 lbf) of thrust each
- Maximum Payload: 250,000 kg (550,000 lb.)
- Cargo Hold Volume: 1,300 m³
- Cargo Hold Dimensions: 43.35 m (142.2 ft) long, 6.4 m (21 ft) wide, 4.4 m (14 ft) tall

Antonov An-124 Ruslan

The Antonov An-124 Ruslan is a heavy-lift cargo aircraft with a length of 69.1m, a wingspan of 73.3m, and a height of 21.08m. It features a maximum payload of 120,000 kg (up to 150,000 kg in later variants), a maximum takeoff weight of 402,000 kg, and a cargo hold volume of 1,040 cubic meters. Powered by four Progress D-18T turbofan engines, it has a maximum cruising speed of 800–850 km/h.



Dimensions: –

Length: 69.10 m (226 ft 8 in) Wingspan: 73.3 m (240 ft 6 in) Height: 20.78 m (68 ft 2 in)

Weights:-

Maximum Takeoff Weight (MTOW): 405,000 kg (892,870 lb) Maximum Payload: 120,000 kg (264,555 lb), with modern variants like the AN-124-100M-150 capable of 150,000 kg (330,693 lb)

Performance :-

Cruising Speed: 750-850 km/h (465-530 mph)

Maximum Flight Range: 14,000 km (8,700 miles) without payload

Engines : – Powerplant: Four ZMKB Progress D-18T turbofan engines

Cargo Capabilities:-

- Cargo Hold Dimensions: 36.5 m (119.7 ft) long, 6.4 m (21 ft) wide, and 4.4 m (14.4 ft) high
- Cargo Compartment Volume: 1,040 m³ (36,730 cu ft)
- Loading: Features a nose cargo hatch and a rear cargo hatch, both with extending ramps. A “kneeling” mechanism adjusts the aircraft’s ground clearance for loading.

Boeing 747-8F

The Boeing 747-8F is a large-capacity freighter with a maximum revenue payload of about 137-140 metric tones, a cruising speed of approximately 901-907 km/h, and a range of around 8,000-8,200 nautical miles. Key dimensions include a length of 76.3 meters, a wingspan of 68.4 meters, and a height of 19.4 meters. The aircraft features a large cargo hold, including 34 main deck pallet positions, and is powered by four General Electric GEnx-2B67 engines.

**Key Specifications :-**

Length: 76.25 m (250 ft 2 in)

Wingspan: 68.45 m (224 ft 7 in)

Height: 19.40 m (63 ft)

Maximum Take-Off Weight (MTOW): 447,696 kg (987,000 lbs)

Payload: 137,700 kg (303,500 lbs)

Cruise Speed: ~900 km/h (560 mph)

Engines: 4 x General Electric GEnx-2B67

Cargo Capacity :-

Total Cargo Volume: Over 850 m³

Main Deck: 692.7 m³ (24,462 ft³) with 34 pallet positions

Lower Holds: 150.9 m³ (5,330 ft³)

Nose Door: A unique feature for large cargo

Performance & Range:-

Range: Approximately 8,185 km (5,086 miles) with maximum payload

Cruise Mach Number: 0.86

Boeing 777F

The Boeing 777F is a long-haul cargo aircraft with a maximum payload of approximately 103,000 kg (227,076 lbs) and a total cargo volume of around 653 m³ (23,060 ft³). It has a maximum range of roughly 9,065 km (5,632 miles), a cruise speed of approximately 896 km/h (557 mph), and is powered by two GE90 engines. Key features include a large main deck cargo door (around 3.72 x 3.15 m or 146 x 124 in) and a capacity for 27 standard pallets on the main deck.



Performance

Maximum Payload: 103,000 kg / 227,076 lbs.

Maximum Range: 9,065 km / 5,632 miles

Cruise Speed: 896 km/h (557 mph)

Max. Take-Off Weight (MTOW): 347,450 kg

Dimensions & Capacity

Total Cargo Volume: 653 m³ / 23,060 ft³

Main Cargo Door (W x H): 372 x 315 cm / 146 x 124 in

Main Deck Pallet Capacity: 27 standard pallets

Lower Deck Pallet Capacity: 10 standard pallets

Engines

Engines: Two GE90-110B1 engines

Other Features

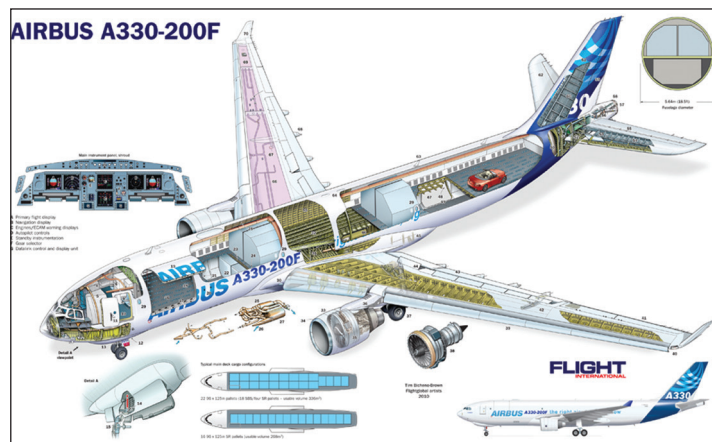
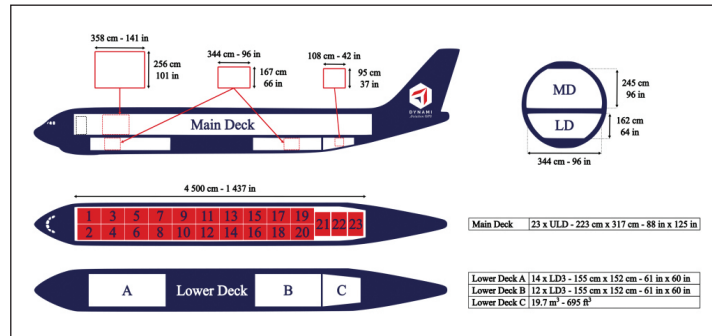
Fuselage Length: 63.73 m

Wingspan: 64.8 m

Tail Height: 18.6 m

Airbus A330-200F

The Airbus A330-200F is a long-range cargo aircraft with a fuselage length of 58.8 meters, a wingspan of 60.3 meters, and a height of 17.39 meters. It has a maximum payload of approximately 65-69 tonnes and can carry up to 23 large pallets on the main deck and 8 on the lower deck. Key performance metrics include a maximum range of around 7,400 kilometers and a cruise speed of 871 km/h (541 mph).



Key Cargo Capacities

Maximum Payload: 70 tonnes (150,000 lb)

Total Volume: Approximately 467 m³ (16,492 ft³)

Main Deck: Can handle industry-standard pallets, with configurations for up to 23 side-by-side pallets.

Lower Deck: Can carry up to 26 LD3 containers.

Features and Applications

Versatility: The A330-200F is equipped with a versatile, multi-purpose main deck cargo loading system for handling diverse cargo.

Long-Range Operations: It's a capable long-haul freighter, ideal for intercontinental logistics and handling imbalanced cargo markets.

Express and General Freight: Its design and capacity make it a suitable choice for both express and general freight operations.

Airbus A300-600F

The Airbus A300-600F has a payload capacity of approximately 47,000 kg (103,617 lbs) and a total cargo volume of around 426 cubic meters (15,044 cubic feet), making it a popular wide-body freighter for medium-haul cargo operations worldwide. It features a pallet-friendly design for efficient loading and unloading of palletized cargo.



Cargo & Capacity

- Main Deck: Configured for various cargo pallets and containers.
- Belly Holds: Accommodates LD3 containers.
- Cargo Volume: Approximately 13,822 cubic feet of usable cargo space.

General Characteristics

- Type: Twin-engine wide-body freighter aircraft.
- Crew: Two pilots.
- Length: 177 feet (54.1 m).
- Wingspan: 147 feet (44.84 m).
- Height: 54.13 feet (16.5 m).
- Maximum Payload: 55,017 kg (121,290 lbs.).
- Maximum Takeoff Weight (MTOW): 375,900 lbs. (170,500 kg).

Engines

- Types: General Electric CF6-80C2 or Pratt & Whitney PW4000.
- Thrust: Up to 61,500 pounds per engine (depending on model).

Performance

- Maximum Cruise Speed: 480 knots (889 km/h).
- Maximum Cruise Speed (approx.): 450 knots (833 km/h).
- Service Ceiling: 40,000 feet.
- Maximum Range (with max payload): Around 4,908 km (2,650 nm).

McDonnell Douglas MD-11F

The McDonnell Douglas MD-11F is a trijet cargo aircraft with a maximum takeoff weight (MTOW) of approximately 273,294 kg (602,500 lbs.) and a maximum payload of about 91,962 kg (202,733 lbs.). It can carry up to 26 pallets on its main deck and 32 LD3 containers below. The aircraft is powered by three General Electric CF6-80C2 engines, has a length of about 61.6 m (202 ft), a wingspan of 51.66 m (169 ft 6 in), and a service ceiling of 10,058 m (33,000 ft).



Key MD-11F Cargo Door Specifications

Width: Approximately 355 cm (11 ft 8 in)

Height: Approximately 259 cm (8 ft 6 in)

Related Specifications

Main Hold Length: Around 4048 cm (132 ft 9 in) Main Hold Width: Around 449 cm (14 ft 9 in) Main Hold Height: Around 245 cm (8 ft) Maximum Payload: Approximately 88 to 90 tones

Boeing 737F

The Boeing 737 is an American-manufactured, twin-engine, narrow-body jet airliner produced by Boeing, which first flew in 1967 and entered service in 1968. It has been produced in four generations (Classic, Next Generation, and MAX) with numerous variants, becoming one of the most successful aircraft in aviation history, used by airlines worldwide. The 737 is a workhorse aircraft for short-to – medium-haul flights, known for its efficiency and versatility, although the 737 MAX variant faced significant challenges after two crashes in 2018 and 2019.



Key Aspects

Manufacturer: Boeing

Aircraft Type: Narrow-body, twin-engine commercial airliner

Status: In service

Primary Users: Major airlines including Southwest, Ryanair, United, and American Airlines

Generations and Variants

The 737 family evolved through several generations, each introducing improvements and variations in size and capabilities:

Boeing 737 Classic: The initial series, including the – 100 and – 200 models.

Boeing 737 Next Generation (NG): Further developed variants like the 737-700, -800, and – 900, offering improved fuel efficiency and performance.

Boeing 737 MAX: The latest generation, featuring more advanced engines (CFM LEAP-1B) and updated aerodynamics.

Production and History

First Flight: April 9, 1967 (737-100)

Entry into Service: February 10, 1968, with Lufthansa

Production: Over 12,000 units have been built across all variants, with production continuing today.

COMPARISON, CARGO & SHIPMENT

Cargo refers to the actual goods or merchandise being transported, while shipment refers to the entire process or act of transporting those goods, encompassing packaging, handling, and delivery. Think of it this way: cargo is what you're moving, and shipment is the journey and all the steps involved in getting it from point A to point B.



1. Life saving drug, Medicines and other Farma grade goods.
2. High value goods.
3. Perishable goods and other.
4. Live Stock Animal & Other
5. Time Saving.
6. Medical Equipment.
7. Security Equipment.



1. Large quantity transportation
2. Non perishable goods
3. Petroleum Product
4. Heavy Machineries and equipment
5. Cold storage product
6. Agriculture product
7. Time Consumption

• GOODS IN LOGISTICS

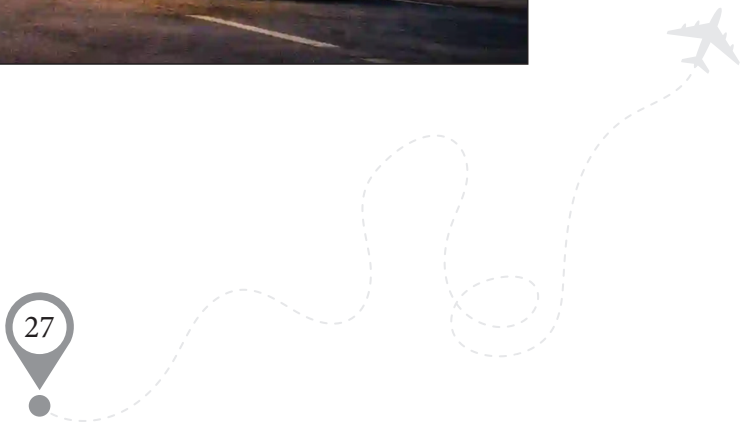
In logistics, goods are categorized by handling needs into General Cargo (standard items), Special Cargo (requiring special care like temperature- controlled goods), and Dangerous Cargo (high-risk items). Other classifications include Bulk Cargo (dry or liquid commodities), Containerized Cargo (goods in standardized containers), and Project Cargo (large, complex equipment).





- **GENERAL CARGO**

These are every day, non-specialized items that do not require unique handling conditions. Examples: Electronics, clothing, toys, and packaged general merchandise.



• SPECIAL CARGO

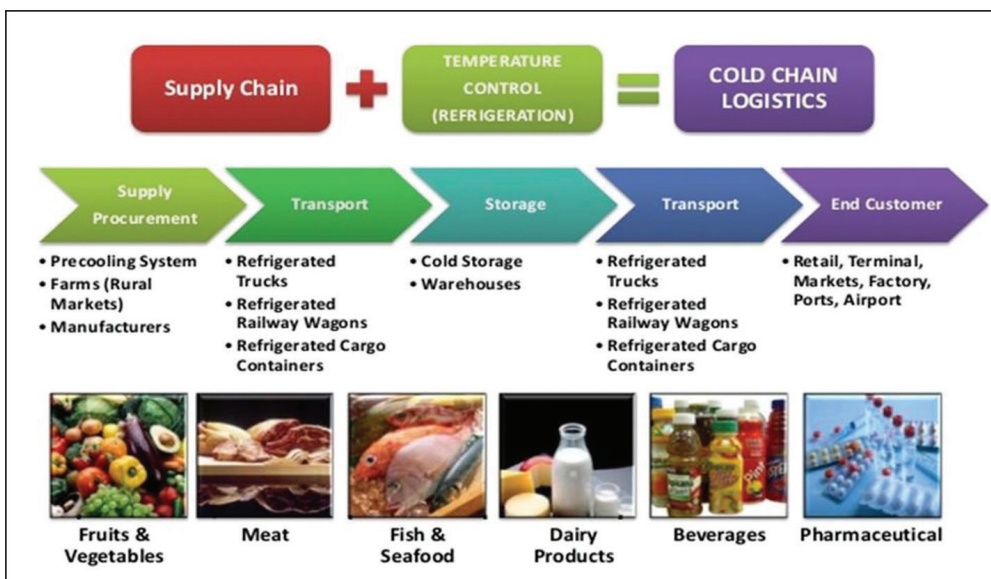
Perishable Goods:

Require controlled temperature, such as fresh produce, dairy, and some medications.



TEMPERATURE- CONTROLLED CARGO:

A broader category including anything that needs a specific temperature, like many foods and pharmaceuticals.



• HIGH-VALUE OR FRAGILE CARGO

Goods like fine art, jewelry, or high-end electronics that need extra care to prevent damage or loss.



• BULK CARGO

Dry Bulk Cargo: Unpackaged, raw materials transported in large quantities, such as grains, coal, salt, and iron ore.



• LIQUID BULK CARGO

Liquids shipped in bulk, including fuels, oils, and some beverages.



• DANGEROUS CARGO:

High-risk materials like chemicals, explosives, or radioactive materials that pose threats to health, safety, or the environment.



- **PROJECT CARGO:**

Large, unique, or complex pieces of equipment for specific projects, such as power plants or industrial installations.







- **LIVE ANIMALS**

Living creatures transported from one place to another for various purposes






• TOP 10 SHIPPING COMPANIES IN INDIA

<p>1. The Shipping Corporation of India (SCI): Established in 1961, SCI is, in fact, India's largest shipping company, offering services in cargo and passenger transportation.</p>	
<p>2. Essar Shipping: Founded in 1976, Essar Shipping, moreover, is a leading provider of maritime transportation, offshore services, and logistics solutions.</p>	
<p>3. Great Eastern Shipping Company: Established in 1948, Great Eastern Shipping, likewise, is one of India's premier shipping companies specializing in the transportation of crude oil and petroleum products.</p>	 <p>THE GREAT EASTERN SHIPPING CO. LTD.</p>
<p>4. Cochin Shipyard Ltd: Founded in 1972, Cochin Shipyard is, additionally, a major shipbuilding and repair company located in Kochi, Kerala, known for constructing ships and offshore platforms.</p>	 <p>COCHIN SHIPYARD LIMITED</p>
<p>5. Container Corporation of India (CONCOR): Established in 1988, CONCOR is, furthermore, a leading Indian logistics company that provides multimodal transport services across the country.</p>	
<p>6. Adani Logistics: Founded in 2006, Adani Logistics, in addition, specializes in providing integrated logistics services, including transportation and warehousing across India.</p>	

<p>7. Mercator Ltd: Mercator Ltd was founded in 1983 and, as a result, has become a leading shipping and logistics organization focusing on energy transportation and offshore support.</p>	
<p>8. All cargo Logistics: Established in 1993, All cargo Logistics is, similarly, one of the leading integrated logistics providers concentrating on all facets of container logistics, project cargo, and multimodal transportation.</p>	
<p>9. Gujarat Pipavav Port Ltd. (APM Terminals Pipavav): Established in 1997, Gujarat Pipavav Port is, consequently, a major cargo port that offers container handling services and connects India to global shipping routes.</p>	
<p>10. Chowgule Steamships: Founded in 1919, Chowgule Steamships is, undeniably, a key player in the Indian maritime industry, focusing on shipping and logistics services for bulk and break-bulk cargo.</p>	

• TOP 10 SHIPPING COMPANIES IN WORLWIDE

<p>Maersk: Founded in 1904 at Denmark As a global leader, Maersk offers end-to-end supply chain solutions, ensuring seamless logistics operations.</p>	
<p>MSC: Moreover, MSC is one of the world's largest container shipping companies, providing an extensive global network. In addition, it focuses on sustainability and operational efficiency.</p>	
<p>CMA CGM: Since its establishment in 1978, the CMA CGM Group has continued to grow, drawing its strength from its family dimension, from a long-term strategic vision and from the expertise of its teams driven by a common passion. In keeping with our history and with our culture, we are driven by the values that unite us. Today, we are reaffirming these values to continue our development and achieve our ambitions.</p>	

<p>COSCO: January 27 Shanghai Waigaoqiao Shipbuilding Co., Ltd. built a 20,000 TEU container ship COSCO SHIPPING TAURUS named and delivered in Shanghai. A major Chinese shipping company offering comprehensive maritime and logistics solutions.</p>	
<p>Hapag-Lloyd: The roots of Hapag-Lloyd AG stretch far back into the 19th century, when the founding 147 companies. Notably, Hapag-Lloyd specializes in container transportation and logistics, with a strong global presence. Additionally, it is known for its customer-centric approach and advanced technology.</p>	
<p>Evergreen Line: Adopted in May 2007, Evergreen Line is the common trading name for the Evergreen Group's container shipping companies that comprise Evergreen Marine Corp. (Taiwan) Ltd., Italia Marittima S.p.A., Evergreen Marine (UK) Ltd., Evergreen Marine (Hong Kong) Ltd., and Evergreen Marine (Singapore) Pte. Ltd. A leading Taiwanese shipping company recognized for its reliable and sustainable operations.</p>	
<p>ONE (Ocean Network Express): Established in July 7th, 2017 A global shipping company formed by the merger of three major Japanese firms.</p>	
<p>ZIM: ZIM is established in 1945 by the Jewish Agency, the Histadrut Labor Federation, and the Israel Maritime League and purchases its first ship, Kedmah (meaning "eastwards" in Hebrew, symbolizing the ship's direction as it sailed east toward the land of Israel).</p>	
<p>PIL (Pacific International Lines): A Singaporean company providing efficient container shipping across key trade routes.</p>	
<p>Matson: Matson Navigation Company's long association with Hawaii began in 1882, when Captain William Matson sailed his three-masted schooner Emma Claudina from San Francisco to Hilo, Hawaii, carrying 300 tons of food, plantation supplies and general merchandise. A U.S. shipping company specializing in domestic and international ocean transportation services.</p>	



AUTHORIZED ADMISSION PARTNER CERTIFICATE

RefNo.: DIU/SWIP/2026/SWIP56400

Date: 20/05/2026

This is to certify that

Name of Organization / Individual: Bandivali Vidya Mandir Trust's Lalit Seth College Of Aviation, Arts, Commerce And Science

Address: Bandivali Vidya Mandir Trust's P. P. Dias Compound, Natvar Nagar, Raod No.5, Jogeshwari East, Maharashtra, Mumbai Suburban, 400060

is hereby appointed and recognized as an

AUTHORIZED ADMISSION PARTNER

for the

Skill *Work Integrated Program (SWIP) of Duke International University, Sikkim.

The Admission Partner is authorized to promote, counsel, and facilitate student admissions for the following SWIP programs offered by the University:

- D.Voc (Diploma in Vocational Education)
- B.Voc (Bachelor of Vocational Education)
- M.Voc (Master of Vocational Education)
- Diploma Programs
- Advanced Diploma Programs
- Certificate Programs

This authorization is valid for the Academic Year 2025 - 2026, subject to adherence to the policies, code of conduct, and admission guidelines prescribed by Duke International University. Any deviation or misuse of this authorization will result in immediate revocation of this certificate.

For Duke International University
Authorized Signatory


Director
Skill & Vocational Education
Duke International University, Sikkim



DUKE INTERNATIONAL UNIVERSITY

Kitam, Sikkim

Established By The Government of Sikkim Under Section 2(f) of UGC Act 1956

BACHELOR OF VOCATION IN (AVIATION & LOGISTICS MANAGEMENT) (EIGHT SEMESTERS)

NEP-2020

SYLLABUS



• REGULATIONS PERTAINING TO BACHELOR OF AVIATION & LOGISTICS MANAGEMENT DEGREE

According to NEP – 2020

I. OBJECTIVES

- To have a clear and comprehensive understanding of aviation business and its operational environment, such as airports, airlines, Ocean Road, cargo, safety, and regulations.
- To develop Aviation & Logistics Global Leaders.
- To provide hands on experience on most widely used computerized reservation system (CRS) for air ticketing and logistic business.
- To demonstrate a high capability in all airlines & cargo business management aspect (e.g. airline business law, aircraft types, basic reservation, and global commerce business).
- To empower students to take up competitive examinations of UPSC, MPSC and other competitive examination and nurturing the student to become a global leader.
- To make students employable in aviation & logistics industry.

II. GRADUATE ATTRIBUTES

The graduate attributes are the outline of the expected course learning outcomes mentioned in the beginning of each course. The characteristic attributes that a graduate will be able to demonstrate through learning various courses which are listed below:

• **Disciplinary Knowledge**

Capability of executing complex projects by acquiring comprehensive knowledge and understanding of one or more disciplines that form part of Aviation & Logistics Management.

• **Communication Skills**

- I. Ability to communicate long standing, Unresolved problems in aviation management:
- II. Ability to show the importance of commerce as precursor to various market developments, since the beginning of civilization and to understand other foreign languages to bridge the communication gap.

• **Critical Thinking**

- I. Ability to engage in reflective and independent thinking by understanding the concepts in every area of Aviation, Logistics, Commerce and Global Business;
- II. Ability to examine the results and apply them to various problem appearing in different branches of Commerce and Aviation & Logistics Business.

• **Problem solving**

- I. Capability to resolved a business problem and apply the classroom learning into practice to offer a solution for the same;
- II. Capabilities to analyze and synthesize data and derive logic for valid conclusion;
- III. Able to comprehend solutions to sustain problems originating in the diverse management areas such as Finance, Marketing, Human Resource, Taxation and so on.

• **Research Related Skills**

- I. Ability to search for, locate, extract, organize, evaluate, and use or present information that is relevant to a particular topic;
- II. Ability to identify the developments in various branches of Commerce, Aviation & Logistics Business.

- **Information and Communication Technology (ICT) digital literacy**

Capability to use various ICT tools (like spreadsheet) for exploring, analysis, and utilizing the information for business purposes.

- **Self-directed Learning**

Capability to work independently on diverse projects and ensure detailed study of various facets of Commerce, Aviation & Logistics Business.

- **Moral and Ethical Awareness/Reasoning**

- I. Ability to ascertain unethical behavior, falsification, and manipulation of information;
- II. Ability to manage self and various social systems.

- **Life-long learning**

Capability of self-paced and self-directed learning aimed at personal development and for improving knowledge/skill development and reskilling in all areas of Commerce, Aviation & Logistics Managements.

III. ELIGIBILITY FOR ADMISSION

Candidate should be an Indian National and other countries should have passed the 10 + 2 examination of Maharashtra State Board of Secondary and Higher Secondary Education and other Board Education and equivalent with Diploma (3 years) recognized by State Government or its equivalent.

AND

Secure Minimum 45% marks (40% marks in case of Backward class category candidate belonging to Maharashtra State Government only).

IV. DURATION OF THE PROGRAMME

The Duration of the Programme is Four (04) years of Eight Semesters. Progressive Certificate, Diploma, Bachelor Degree or Bachelor Degree with Honors provided at the end of each year of Exit of the Four years Undergraduate Programme

Exit with	Credits Requirement*
Certificate at the Successful Completion of First Year (Two Semesters) of the Four Years Bachelor of Aviation & Logistics Management Undergraduate Degree Programme	50
A Diploma at the Successful Completion of the Second Year (Four Semesters) of the Four Years Bachelor of Aviation & Logistics Management Undergraduate Degree Programme	100 (50+50)
Basic Bachelor Degree at the Successful Completion of the Third Year (Six Semesters) of the Four Years Bachelor of Aviation & Logistics Management Undergraduate Degree Programme	146 (50+50+46)
Bachelor Degree with Honors in a Discipline at the Successful Completion of the Four Years (Eight Semesters) of the Four Years Bachelor of Aviation & Logistics Management Undergraduate Degree Programme	188 (50+50+46+ 42)

V. MEDIUM OF INSTRUCTION

The medium of instruction shall be English only.



VI. ATTENDANCE

- For the purpose of calculating attendance, each semester shall be taken as a Unit.
- A student shall be considered to have satisfied the requirement of attendance for the semester, if he/she has attended not less than 75% in aggregate of the number of working periods in each of the courses compulsorily.
- A student who fails to satisfy the 75% attendance shall not be permitted to give semester examination.

VII. TEACHING AND EVALUATION

Post graduates teachers from Commerce and Management stream recognized by respective university are only eligible to teach and to evaluate the Courses (except languages, compulsory additional subjects and core Information Technology related subjects) mentioned in this regulation. Languages and additional courses shall be taught by the graduates / post graduates from recognized by University (UGC of India).

VIII. RECORD MAINTENANCE AND SUBMISSION

- Every college is required to establish an Innovative business lab / computer lab to enable students to get practical knowledge of business activities and online learning.
- In every semester, the student should keep a record of the Business Lab/Field Study Activity and submit it to the concerned faculty.
- The University/ Higher and technical Education is authorized to make random surprise visits to the colleges and verify record- books and the internal marks awarded.

IX. Guidelines for Continuous Internal Evaluation (CIE) and Semester End Examination (SEE)

The CIE and SEE will carry 40% and 60% weightage each, to enable the course to be evaluated for a total of 100 marks, irrespective of its credits. The evaluation system of the course is comprehensive & continuous during the entire period of the Semester. For a course, the CIE and SEE evaluation will be on the following parameters:

SL No.	Parameters for the Evaluation	Marks
	Continuous Internal Evaluation (CIE)	-
1	Continuous & Comprehensive Evaluation (CCE)	20 Marks
2	Internal Assessment Tests (IAT)	20 Marks
	Total of CIE (A+B)	40 Marks
3	Semester End Examination (SEE)	60 Marks
	Total of CIE and SEE (A + B + C)	100 Marks

A. Continuous & Comprehensive Evaluation (CCE):

The CCE will carry a maximum of 10% weightage (10 marks) of total marks of a course. The faculty member can select any four of the following assessment methods, Minimum of four of the following assessment methods of (2.5) marks each:

- Individual Assignments
- Seminars/Classroom Presentations/ Quizzes
- Group Discussions /Class Discussion/ Group Assignments
- Case studies/Case lets
- Participatory & Industry-Integrated Learning/ Field visits
- Practical activities / Problem Solving Exercises
- Participation in Seminars/ Academic Events/Symposia, etc.
- Mini Projects/Capstone Projects
- Any other academic activity.

B. Internal Assessment Tests (IAT):

The IAT will carry a maximum of 20% weightage (20 marks) of total marks of a course, under this component, two tests will have to be conducted in a semester for 25 marks each and the same is to be scaled down to 10 marks each. Standard format is given below.

- C. In the case of 50 percent of CIE weightage courses, faculty members can choose assessment methods accordingly for the required marks as mentioned above.

Template for IAT

Internal Assessment Test

Name of the Course:

Course Code:

Duration: 1 Hours

Total Marks: 25

SECTION-A

- I. Answer any two of the following questions. (Questions related to Concepts) (2X 2 = 4 Marks) @ 2 Marks Each

- 1.
- 2.
- 3.

SECTION-B

- II. Answer any two of the following questions. (Questions are related to Understanding and Application) (2 X 5 = 10 Marks) @ 5 Marks Each

- 4.
- 5.
- 6.

SECTION – C

- III. Answer any one of the following questions. (Questions are related to analysis and evaluation) (1 X 11 = 11 Marks) @ 11 Marks Each

- 7.
- 8.

(A+B+C= 25 Marks)

XXXXXXXX

X. APPEARANCE FOR THE EXAMINATION

A candidate shall be considered to have appeared for the examination only if he/she has submitted the prescribed application for the examination along with the required fees to the university.

PATTERN OF QUESTION PAPER

SECTION-A 1. a,b,c,d,e,f, g	(Conceptual questions) Answer any FIVE out of seven sub questions	(05 X 02 = 10 Marks)
SECTION -B 2,3,4,5,6	(Application questions) Answer any THREE out of five questions	(03 X 04 = 12 Marks)
SECTION-C 7,8,9,10, 11	(Analysis and understanding questions) Answer any THREE out of five questions	(03 X 10 = 30 Marks)
SECTION-C:	Total of CIE (A+B)	40 Marks
SECTION-D 12,13,14	Question completely based on the skill Development part (lab activities) Answer any ONE out of three questions	60 Marks
TOTAL		60 Marks



BALM-Aviation & Logistics Management

Curriculum as per National Educational Policy (NEP 2020) (CBCS – SEMESTER SCHEME) COURSE MATRIX
FIRST SEMESTER

Sr No	Course Code	Title of the Course	Category of courses	Teaching hours per week (L+T+P)	SEE	CIE	Total Marks	Credits
1	Lang.1.1	Language – I	AECC	3+1+0	70	30	100	3
2	Lang.1.2	Language – II	AECC	3+1+0	70	30	100	3
3	BALM 1.1	Introduction to Aviation & Airline Industry	DSC	4+0+2	70	30	100	4
4	BALM 1.2	Fundamentals of Accountancy	DSC	5+0+0	70	30	100	4
5	BALM 1.3	Principles of Airline and Airport Operations	DSC	4+0+0	70	30	100	4
6	BALM 1.4	Digital Fluency –Aviation Business Communication	SEC-SB	1+0+1	50	50	100	2
7	BALM 1.5	Air Transport & Regulations	OEC	3+0+0	50	50	100	3
8		Physical Education -Yoga	SEC-VB	0+0+2				1
9		Health and Wellness	SEC-VB	0+0+2				1
Sub – Total (A)					450	250	700	25

Note:

- One Hour of Lecture is equal to 1 Credit.
- One Hour of Tutorial is equal to 1 Credit (Except Languages).
- Two Hours of Practical is equal to 1 Credit

Acronyms Expanded

- AECC : Ability Enhancement Compulsory Course
- DSC © : Discipline Specific Core (Course)
- SEC-SB/VB : Skill Enhancement Course-Skill Based/Value Based
- OEC : Open Elective Course
- DSE : Discipline Specific Elective
- SEE : Semester End Examination
- CIE : Continuous Internal Evaluation
- L+T+P : Lecture + Tutorial + Practical(s)

Note: Monday to Thursday 8 hours industrial training.
Saturday & Sunday 8 hours campus lecture.



BALM-Aviation & Logistics Management

Curriculum as per National Educational Policy (NEP 2020) (CBCS – SEMESTER SCHEME) COURSE MATRIX
SECOND SEMESTER

Sr No	Course Code	Title of the Course	Category of courses	Teaching hours per week (L+T+P)	SEE	CIE	Total Marks	Credits
1	Lang.1.1	Language – I	AECC	3+1+0	70	30	100	3
2	Lang.1.2	Language – II	AECC	3+1+0	70	30	100	3
3	BALM 2.1	Passenger & Baggage Handling	DSC	3+0+2	70	30	100	4
4	BALM 2.2	Management Behavioral Process	DSC	4+0+0	70	30	100	4
5	BALM 2.3	Airline Customer Services	DSC	4+0+0	70	30	100	4
6	BALM 2.4	Digital Fluency– Aviation Business Communication	SEC-SB	1+0+2	50	50	100	2
7	BALM 2.5	Aviation Law	OEC	3+0+0	50	50	100	3
8		Physical Education – Yoga	SEC-VB	0+0+2				1
9		Health and Wellness	SEC-VB	0+0+2				1
Sub – Total (A)					450	250	700	25

Note:

- One Hour of Lecture is equal to 1 Credit.
- One Hour of Tutorial is equal to 1 Credit (Except Languages).
- Two Hours of Practical is equal to 1 Credit

Acronyms Expanded

- AECC : : Ability Enhancement Compulsory Course
- DSC © : : Discipline Specific Core (Course)
- SEC-SB/VB : : Skill Enhancement Course-Skill Based/Value Based
- OEC : : Open Elective Course
- DSE : : Discipline Specific Elective
- SEE : : Semester End Examination
- CIE : : Continuous Internal Evaluation
- L+T+P : : Lecture + Tutorial + Practical(s)

Note: Monday to Thursday 8 hours industrial training.

Saturday & Sunday 8 hours campus lecture.





BALM-Aviation & Logistics Management

Curriculum as per National Educational Policy (NEP 2020) (CBCS -SEMESTER SCHEME) COURSE MATRIX
THIRD SEMESTER

Sr No	Course Code	Title of the Course	Category of courses	Teaching hours per week (L+T+P)	SEE	CIE	Total Marks	Credits
1	Lang.1.1	Language – I	AECC	3+1+0	60	40	100	3
2	Lang.1.2	Language – II	AECC	3+1+0	60	40	100	3
3	BALM 3.1	Cost Accounting	DSC	3+0+2	60	40	100	4
4	BALM 3.2	Logistics and Air Cargo Management	DSC	4+0+0	60	40	100	4
5	BALM 3.3	Statistics for Business Decision	DSC	3+0+2	60	40	100	4
6	BALM 3.4	Introduction to Artificial Intelligence	SEC	2+0+3	30	20	50	2
7	BALM 3.5	Sports	SEC- VB	0+0+2	-	25	25	1
8	BALM 3.6	NSS/NCC/Any Other	SEC- VB	0+0+2	-	25	25	1
9	BALM 3.7	Any one of the following a. Airline and Airport Operations b. Social Media Marketing	OEC	3+0+0	60	40	100	3
Sub - Total (C)					390	310	700	25

Note: Monday to Thursday 8 hours industrial training.
Saturday & Sunday 8 hours campus lecture.





BALM-Aviation & Logistics Management

Curriculum as per National Educational Policy (NEP 2020) (CBCS -SEMESTER SCHEME) COURSE MATRIX
FOURTH SEMESTER

Sr No	Course Code	Title of the Course	Category of courses	Teaching hours per week (L+T+P)	SEE	CIE	Total Marks	Credits
1	Lang.1.1	Language – I	AECC	3+1+0	60	40	100	3
2	Lang.1.2	Language – II	AECC	3+1+0	60	40	100	3
3	BALM 4.1	Airline Marketing	DSC	4+0+0	60	40	100	4
4	BALM 4.2	Aviation law and Aircraft Rules and Regulation.	DSC	4+0+0	60	40	100	4
5	BALM 4.3	Financial Management	DSC	3+0+2	60	40	100	4
6	BALM 4.4	Constitution of India	AECC	2+0+0	30	20	50	2
7	BALM 4.5	Sports	SEC- VB	0+0+2	-	25	25	1
8	BALM 4.6	NSS/NCC/ Any Other	SEC- VB	0+0+2	-	25	25	1
9	BALM 4.7	Any one of the following a. In- Flight Services b. Business Leadership Skills	OEC	3+0+0	60	40	100	3
Sub - Total (D)					390	310	700	25

Note:

- One Hour of Lecture is equal to 1 Credit.
- One Hour of Tutorial is equal to 1 Credit (Except Languages).
- Two Hours of Practical is equal to 1 Credit

Acronyms Expanded

- AECC : Ability Enhancement Compulsory Course
- DSC © : Discipline Specific Core (Course)
- SEC-SB/VB : Skill Enhancement Course-Skill Based/Value Based
- OEC : Open Elective Course
- DSE : Discipline Specific Elective
- SEE : Semester End Examination
- CIE : Continuous Internal Evaluation
- L+T+P : Lecture+ Tutorial+ Practical(s)

Note: Monday to Thursday 8 hours industrial training.
Saturday & Sunday 8 hours campus lecture.





BALM-Aviation & Logistics Management

Curriculum as per National Educational Policy (NEP 2020) (CBCS -SEMESTER SCHEME) COURSE MATRIX
FIFTH SEMESTER

Sr No	Course Code	Title of the Course	Category of courses	Teaching hours per week (L+T+P)	SEE	CIE	Total Marks	Credits
1	BALM 5.1	Goods and Services Tax	DSC	4+0+0	60	40	100	4
2	BALM 5.2	Strategic Human Resource Management	DSC	4+0+0	60	40	100	4
3	BALM 5.3	Aircraft Maintenance Management	DSC	4+0+0	60	40	100	4
4	BALM 5.4	Cabin Crew Management	DSC	4+0+0	60	40	100	4
5	BALM 5.5	Micro Economics	DSC	4+0+0	60	40	100	4
6	BALM 5.6	Minor Project	OEC	0+0+0	70** Project Report	30** Viva-Voce	100	3
Sub - Total (D)					370	230	600	23

Note:

- One Hour of Lecture is equal to 1 Credit.
- One Hour of Tutorial is equal to 1 Credit (Except Languages).
- Two Hours of Practical is equal to 1 Credit

Acronyms Expanded

- AECC : Ability Enhancement Compulsory Course
- DSC © : Discipline Specific Core (Course)
- SEC-SB/VB : Skill Enhancement Course-Skill Based/Value Based
- OEC : Open Elective Course
- DSE : Discipline Specific Elective
- SEE : Semester End Examination
- CIE : Continuous Internal Evaluation
- L+T+P : Lecture+ Tutorial+ Practical(s)

* Mini Project on Airline Operations and Corporate Social Responsibility of an Airline company.

**The student has to submit a Project Report of at least 50 Pages. The Project carries 70 Marks for the Report and 30 Marks for Viva-Voce.

Note: Monday to Thursday 8 hours industrial training.

Saturday & Sunday 8 hours campus lecture.



BALM -Aviation & Logistics Management

Curriculum as per National Educational Policy (NEP 2020) (CBCS -SEMESTER SCHEME) COURSE MATRIX
SIXTH SEMESTER

Sr No	Course Code	Title of the Course	Category of courses	Teaching hours per week (L+T+P)	SEE	CIE	Total Marks	Credits
1	BALM 6.1	Entrepreneurship Development	DSC	4+0+0	60	40	100	4
2	BALM 6.2	Principles of Airline and Airport Management	DSC	4+0+0	60	40	100	4
3	BALM 6.3	Airport Strategic Planning	DSC	4+0+0	60	40	100	4
4	BALM 6.4	Marketing Management	DSC	4+0+0	60	40	100	4
5	BALM 6.5	Production and Operation Management	DSC	4+0+0	60	40	100	4
6	BALM 6.6	Dissertation	OEC	0+0+0	70** Project Report	30** Viva-Voce	100	3
Sub - Total (D)					370	230	600	23

Note:

- One Hour of Lecture is equal to 1 Credit.
- One Hour of Tutorial is equal to 1 Credit (Except Languages).
- Two Hours of Practical is equal to 1 Credit

Acronyms Expanded

- AECC : Ability Enhancement Compulsory Course
- DSC © : Discipline Specific Core (Course)
- SEC-SB/VB : Skill Enhancement Course-Skill Based/Value Based
- OEC : Open Elective Course
- DSE : Discipline Specific Elective
- SEE : Semester End Examination
- CIE : Continuous Internal Evaluation
- L+T+P : Lecture+ Tutorial+ Practical(s)

*Research based Dissertation on Airline / Airport Employees, Air Passengers, Travel Agents, Tour Operators, Service Providers, etc.

**The student has to submit Dissertation of at least 50 Pages. The Dissertation carries 70 Marks and 30 Marks for Viva-Voce.

Note: Monday to Thursday 8 hours industrial training.
Saturday & Sunday 8 hours campus lecture.



BBA-Aviation & Logistics Management

Curriculum as per National Educational Policy (NEP 2020) (CBCS -SEMESTER SCHEME) COURSE MATRIX SEVENTH SEMESTER

Sr No	Course Code	Title of the Course	Category of courses	Teaching hours per week (L+T+P)	SEE	CIE	Total Marks	Credits
1	BBAA 7.1	Project	DSC		100	50	150	
2	BBAA 7.2	Certification Course	DSC		100		100	
Sub - Total (D)							250	21

BBA-Aviation & Logistics Management

Curriculum as per National Educational Policy (NEP 2020)
(CBCS -SEMESTER SCHEME) COURSE MATRIX EIGHTTH SEMESTER

Sr No	Course Code	Title of the Course	Category of courses	Teaching hours per week (L+T+P)	SEE	CIE	Total Marks	Credits
1	BBAA 8.1	Project	DSC		100	50	150	
2	BBAA 8.2	Certification Course	DSC		100		150	
Sub - Total (D)							250	21

Note:

- One Hour of Lecture is equal to 1 Credit.
- One Hour of Tutorial is equal to 1 Credit (Except Languages).
- Two Hours of Practical is equal to 1 Credit

Acronyms Expanded

- AECC : Ability Enhancement Compulsory Course
- DSC © : Discipline Specific Core (Course)
- SEC-SB/VB : Skill Enhancement Course-Skill Based/Value Based
- OEC : Open Elective Course
- DSE : Discipline Specific Elective
- SEE : Semester End Examination
- CIE : Continuous Internal Evaluation
- L+T+P : Lecture+ Tutorial+ Practical(s)

Foreign Languages (Read & Write – Anyone) as per Syllabus: -

. Russian . French . Chinese . German . Arabic . Spanish